

Look for spangle and silk button galls on the underside of oak leaves.



Many flowers bloom here, such as primroses and cuckoo flower in the Spring, brooklime by the path with large-leaved Japanese knotweed in a clump on the right.

A large ivy-covered oak on the left probably contains a bat roost. The crossroads is an exceptionally good area for small birds, damselflies and ragged robin. Glow worms are visible after dark in Summer.

**13.** (The path between points 13 and 14 is also part of the North Wood Trail.)

Turn right along the Causeway between two lakes. Look out for wildfowl such as coot, moorhen, Canada geese, mallard and seasonal visitors such as gadwall, little grebe and tufted duck.

Return to the starting point by the golf course.



Line Drawings © Denys Ovenden 2008



## Part of the Colne Valley Park

### Hillingdon Natural History Society

Most members join with limited knowledge, and through society activities gain considerable enjoyment from a greater insight into nature. Our regular programme includes bird watching, botany and entomology, conservation, indoor meetings, and guided field trips all year round.

There are usually three society events per month - for the membership cost of 20p per week for an entire family!

On the first Wednesday of each winter month we have an evening talk on specialist subjects. In summer we have field visits to local sites of special interest.

On the last weekend of each month (not December) we visit a more distant area, having a pub or picnic lunch.

The Greylags, which include retired members, manage Harefield Place Nature Reserve on Thursday mornings.

Anecdotal and informative articles are published in our society newsletter twice a year, together with the programme for the following six months. We have published an updated records book for the reserve.

For further information contact Ann Rix (Membership Secretary) or Alan Rix (Chairman) on 01895 466804 or visit our website at [www.hillingdon-naturalhistorysociety.org.uk](http://www.hillingdon-naturalhistorysociety.org.uk)

To join the society please send details as follows:  
I wish to join Hillingdon Natural History Society.

Name, Address [and telephone number]

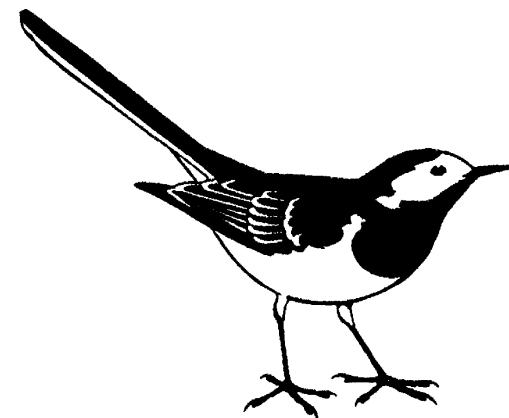
Please choose one category:

Family membership	£10.00
Individual membership	£ 8.00
Unwaged	£ 5.00

Please send your cheque, payable to Hillingdon Natural History Society to:  
Mrs Ann Rix, Membership Secretary, 31 Norfolk Road, Uxbridge, Middlesex. UB8 1BL

## HILLINGDON NATURAL HISTORY SOCIETY

### Harefield Place South Wood Nature Trail



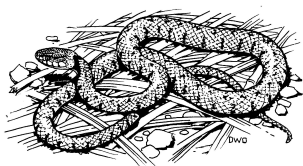
## Part of Frays Valley Local Nature Reserve

Begin the trail by the golf course practice ground. Walk towards the lakes then bear left into the South Wood.

**14.** A notice board here shows “HNHS Nature Reserve”. This is a wet wood, close to the lake, with ditches and boggy patches under bridges and board walks.

Willow and alder trees by the lake provide perches for kingfishers.

Grass snakes bask along the water's edge and may be seen swimming in the lake. Common reed grows by the boardwalk so listen for warblers in the Spring.

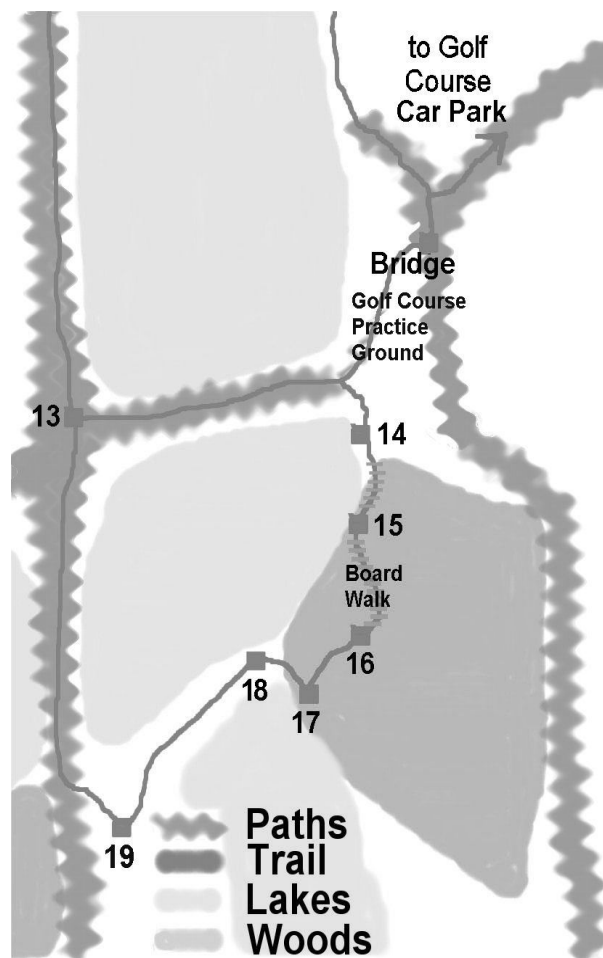


Look over the lake for great crested grebes, coot, herons, swans and various ducks.

**15.** At the end of the boardwalk yellow flag grows among the rushes. This covert reflects its former use as shooting cover.

On the laurel and rhododendrons leaf hoppers carry a fungus which causes many buds to blacken and die. The bushes form a dark tunnel limits the growth of ground cover plants.

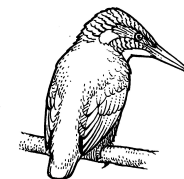
**16.** The trail passes large oak trees on the left hand side. The large leaves belong to wych elm which is not troubled by Dutch elm disease. Rotting timber provides shelter for stag beetle larvae so ‘Please do not disturb’. Orange balsam flowers here in late Summer.



A double row of poplars was planted here, once a cash crop for matches but no longer valuable timber. On a windy day listen to the sound of the leaves.

Bear right passing a double-trunked poplar with moss covered branches. Cross the bridge over the ditch. Sedges grow in the ditches. Bracket and ear fungi can be seen on the willows and elders.

**17.** From the hide look across the Wildfowl Lake towards the island where herons roost and cormorants perch.



This is a great place for insects. Watch pond skaters and whirligig beetles on the water surface, while dragonflies and damselflies dance in the air.

Turn left out of the hide, noticing the large leaves of dock, coltsfoot, burdock and comfrey. On the right is coppiced hazel with lianas of honeysuckle.

**18.** The woodland now gives way to an open meadow area which has been invaded by brambles and goat's-rue. Look for siskins in the alders in Winter, warblers in Spring, and, throughout the year for deer prints on the path.

Teasels can be seen all through the year attracting goldfinches to their seedheads. On the right, look for coot and grebe nests and swans on the island. Look and listen for sparrowhawks, finches and cuckoos in the Spring.



**19.** Turn right along the muddy former railway embankment passing the entrance to Denham Lock Wood on the left..

Breaks in the trees allow views across the Carp Lake on the left where swallows, swifts and martins feed on insects in Summer.